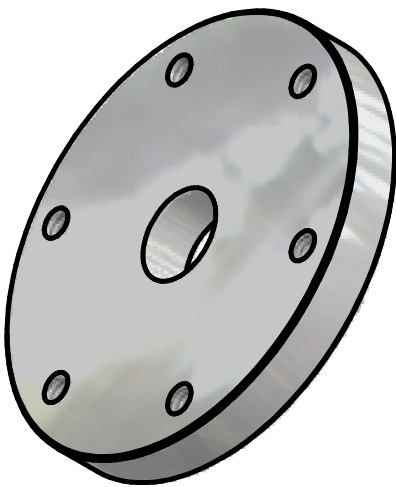
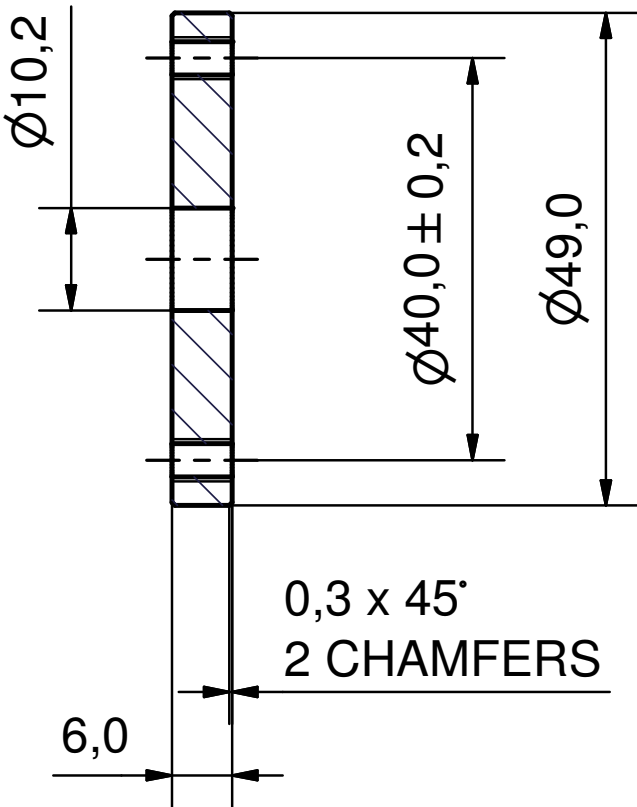
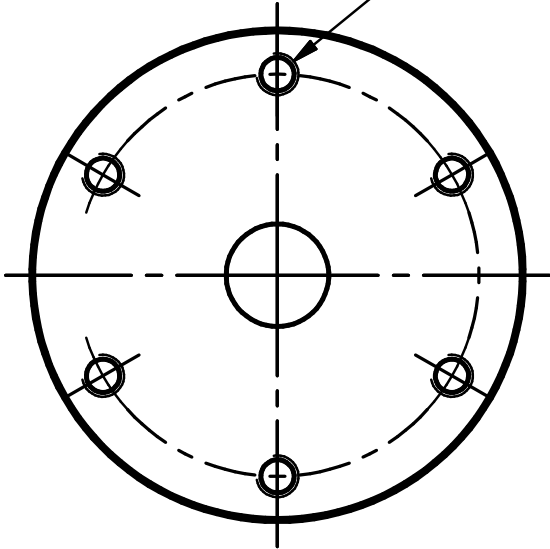




3.2 ✓

8-32 UNC THRU
6 HOLES



Issued all design changes as Rev C (TIO) - 4/19/07 - SAB

								Rev. C			
								Scale : 1:1		mat: Stainless Steel, 316	
								ASSEMBLY : 75 kW CW Input Coupler			
				Date	Name	DESIGNATION : INNER CONE FLANGE					
				Drawn	10/5/04					Churanov	
				Checked	01-05-07					VM	
				Standard							
							100.330.004				
State	Changes	Date	Name						1 A4		

